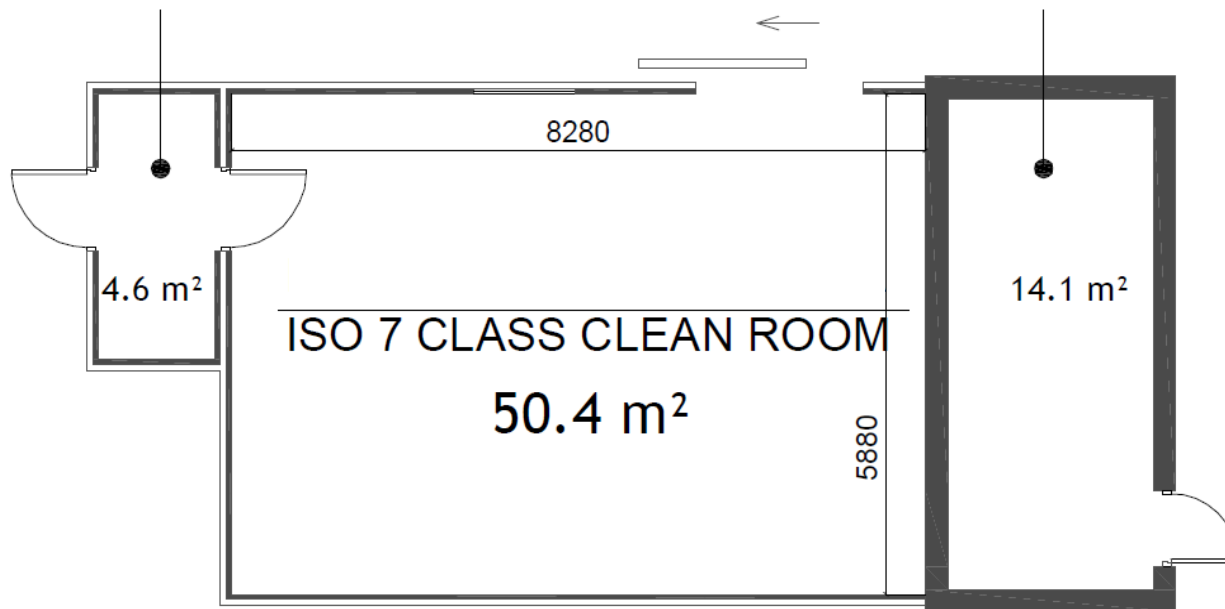


# ISO 7 class Clean Room

# Overall information

PERSONNEL/MATERIAL HATCH

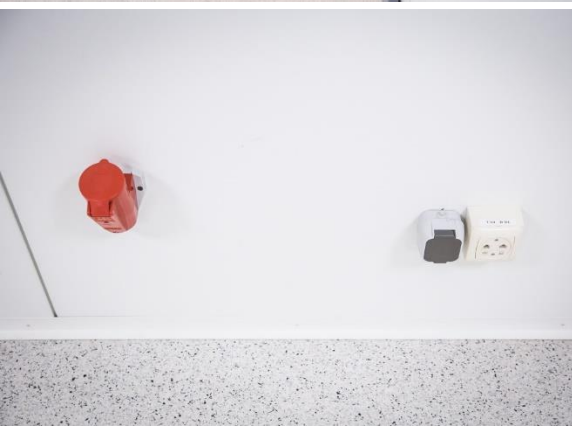
TECHNICAL ROOM



## ISO 7 class CLEAN ROOM

Area	50,4 sqm
Ceiling height	2,8 m
Airflow pattern	Non-unidirectional
Air changes	20-40 per hour
Ventilation capacity	+6000 / -6000 m3/h
Year of construction	2010
Hours used	3145 h
Equipment included	Yes
PRICE	30 000 euro + VAT

# Photos of the Clean Room





# Equipment included



## VHTP ISO class 7 clean room:

- Ceiling and wall panels are build on metal constructions;
- Metal construction fire security line REI 60 minute;
- Clean room dividing construction - EI 60 minute.

## VHTP ISO class 7 Clean room walls:

- Made of RUKKI Sandwich panels, installed vertically;
- Panels for internal walls;
- From metal in order to avoid Electromagnetic Compatibility (EMC) disturbances from the outside.

## Ceiling:

- RUKKI Sandwich panels;
- Holes for filters and for lighting which are fixed in ceiling;
- Air filters are placed not in the air-outlets but directly in the air condition system;
- Place for fire security devices.

PN-1 AHU  
NOVAIR CTA36  
L-6000m<sup>3</sup>/h; 600Pa  
1117kg  
Mitrinājs 7,5 kW; 11A  
N ventilātors 3 kW; 6,5 A  
P ventilātors 4 kW; 8,5 A

RISD 400  
L-1200m<sup>3</sup>/h  
2m virs zemes

Ø630  
L-6000m<sup>3</sup>/h

TERMILAM TAR-M  
+ HEPAFIL LAM

IRIS-500  
L-3000m<sup>3</sup>/h

Ø250  
L-750m<sup>3</sup>/h

Ø400  
L-1500m<sup>3</sup>/h

TERMILAM TAR-M  
+ HEPAFIL LAM

Ø500  
L-3000m<sup>3</sup>/h

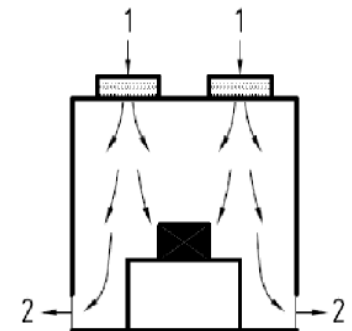
TERMILAM TAR-M  
+ HEPAFIL LAM

Ø400  
L-1500m<sup>3</sup>/h

TERMILAM TAR-M  
+ HEPAFIL LAM

[illegible]

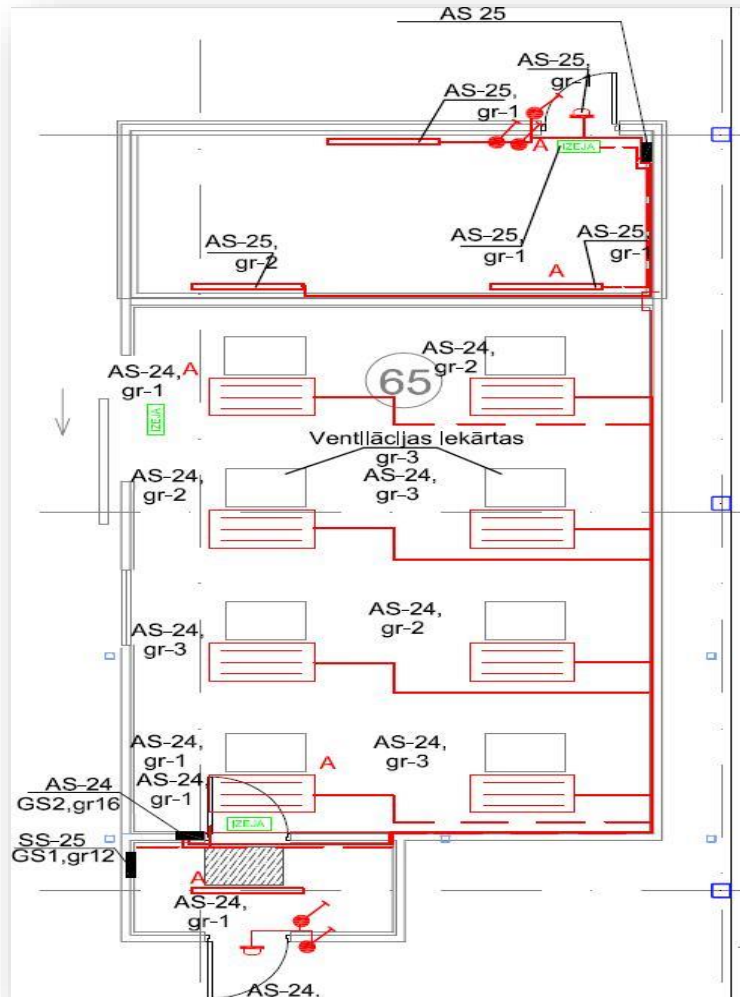
- Steam humidifier
- Generator
- Water heating and cooling battery
- Noise muffler
- Manometers
- Self-adjustment





# Power and lighting

## Lighting

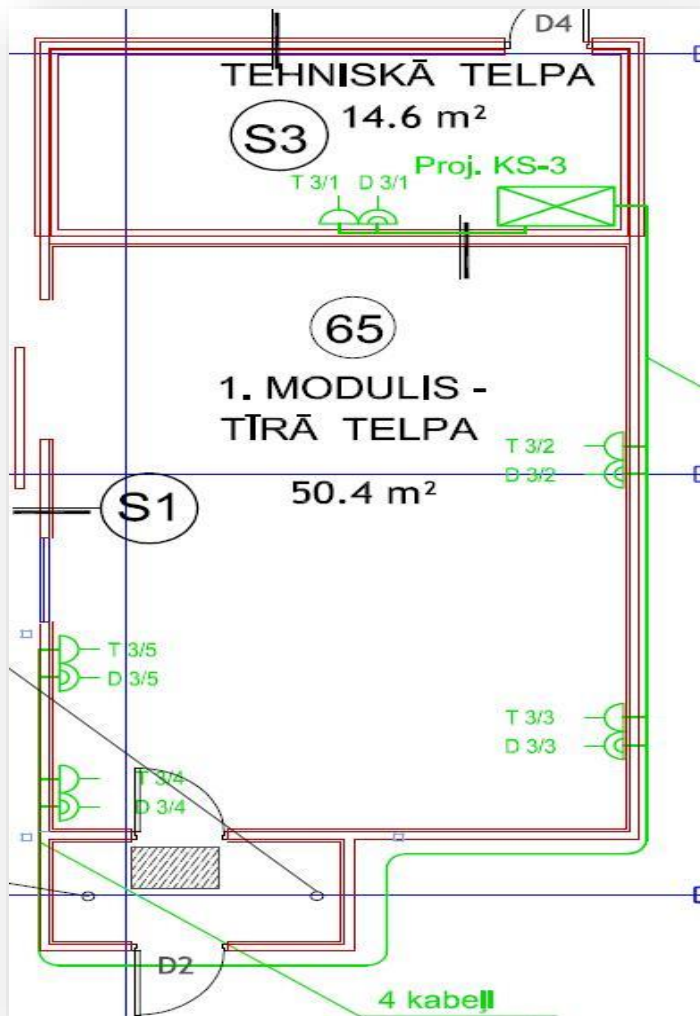


## Power and lighting:

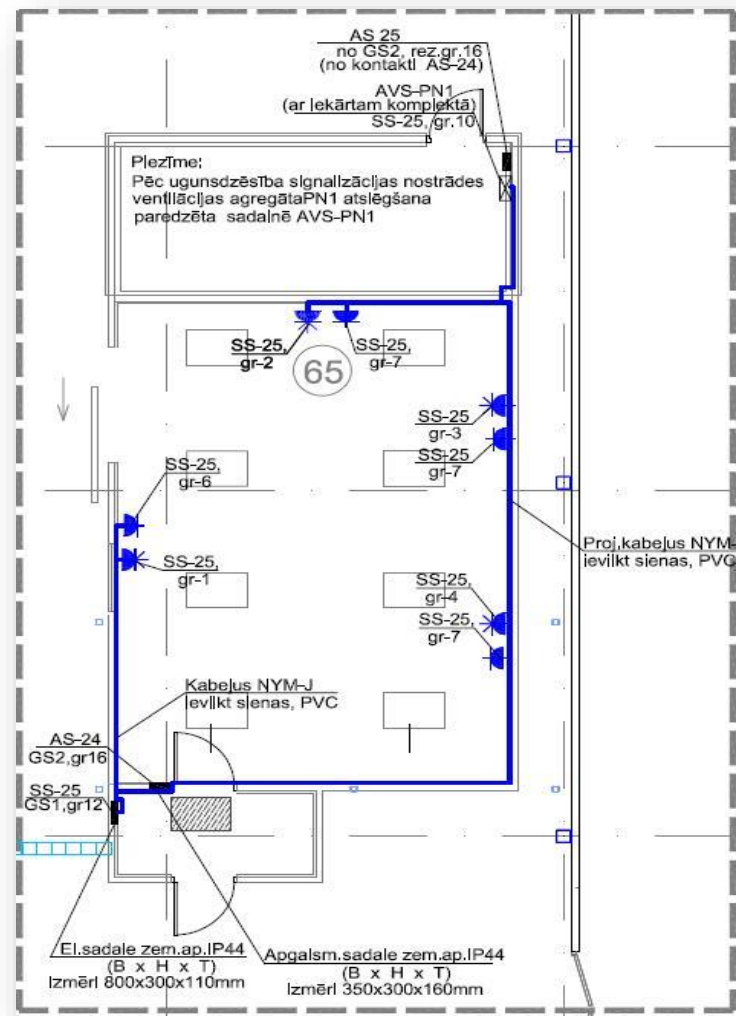
- Supply of electricity is from existing main distribution;
- Electrical power predicted with reserve in case of more powerful equipment connection;
- An emergency power-off provided at a central place.
- The lighting allow illumination  $> 1000$  Lux on workbench level in clean room;
- 200 Lux in technical room;
- Hermetical luminary with safety level IP55;
- Luminescence lamp 54W;
- “Exit” symbol at exit of clean room.

# The computer/phone and electricity network

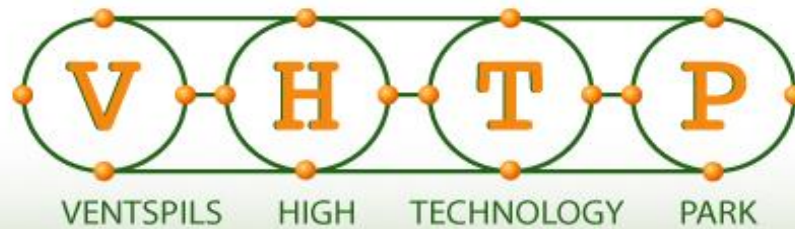
## Computer/phone network



## Electricity network







## More information:

Sandra Rožkalne  
Head of Finance and Service Department  
Ventspils High Technology Park  
Ventspils Augsto tehnoloģiju parks 1, Ventspils, Latvia  
Phone: +371 26831772  
E-mail: [sandra.rozkalne@vhtp.lv](mailto:sandra.rozkalne@vhtp.lv)  
[www.vhtp.lv](http://www.vhtp.lv)